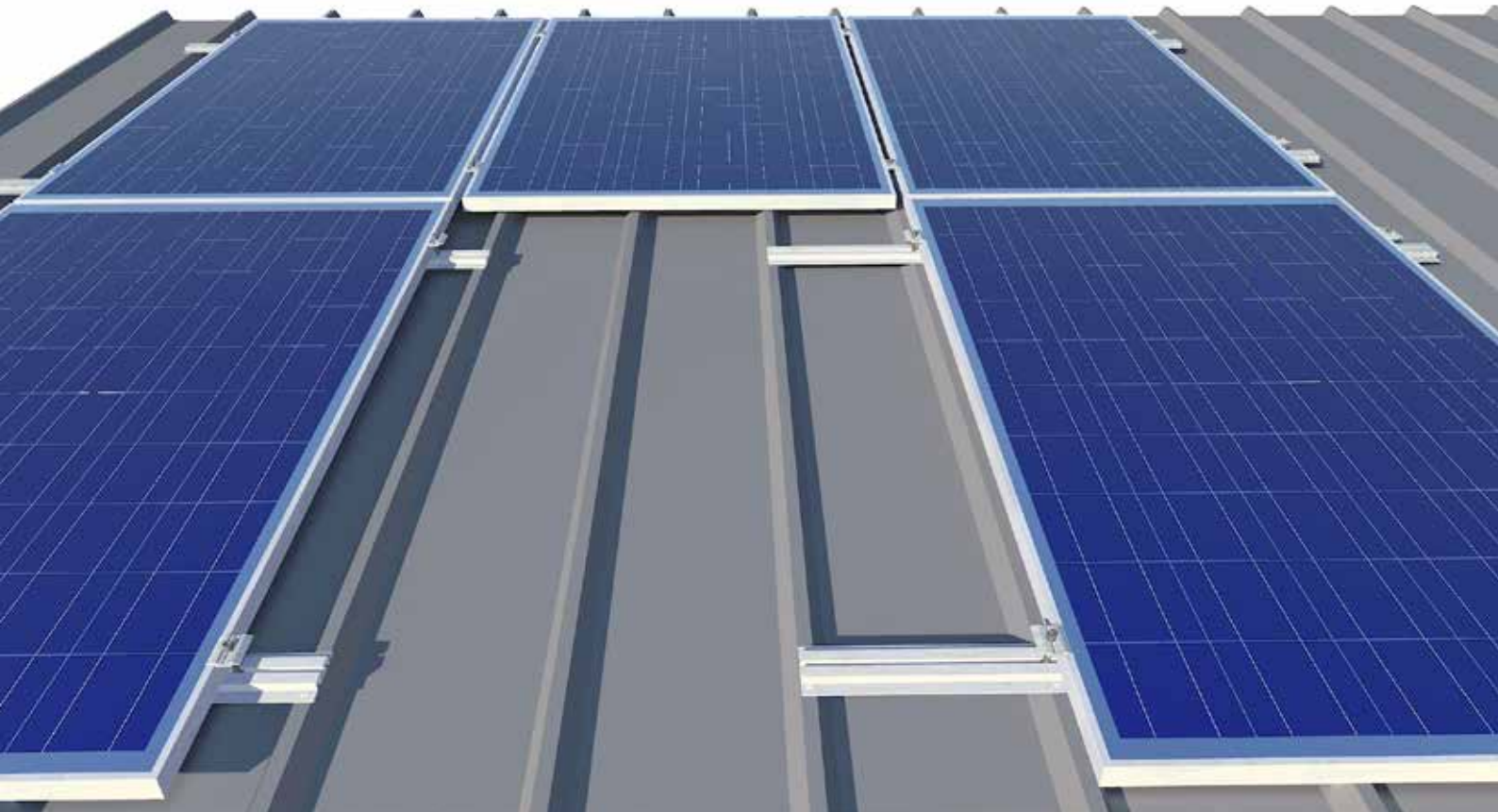
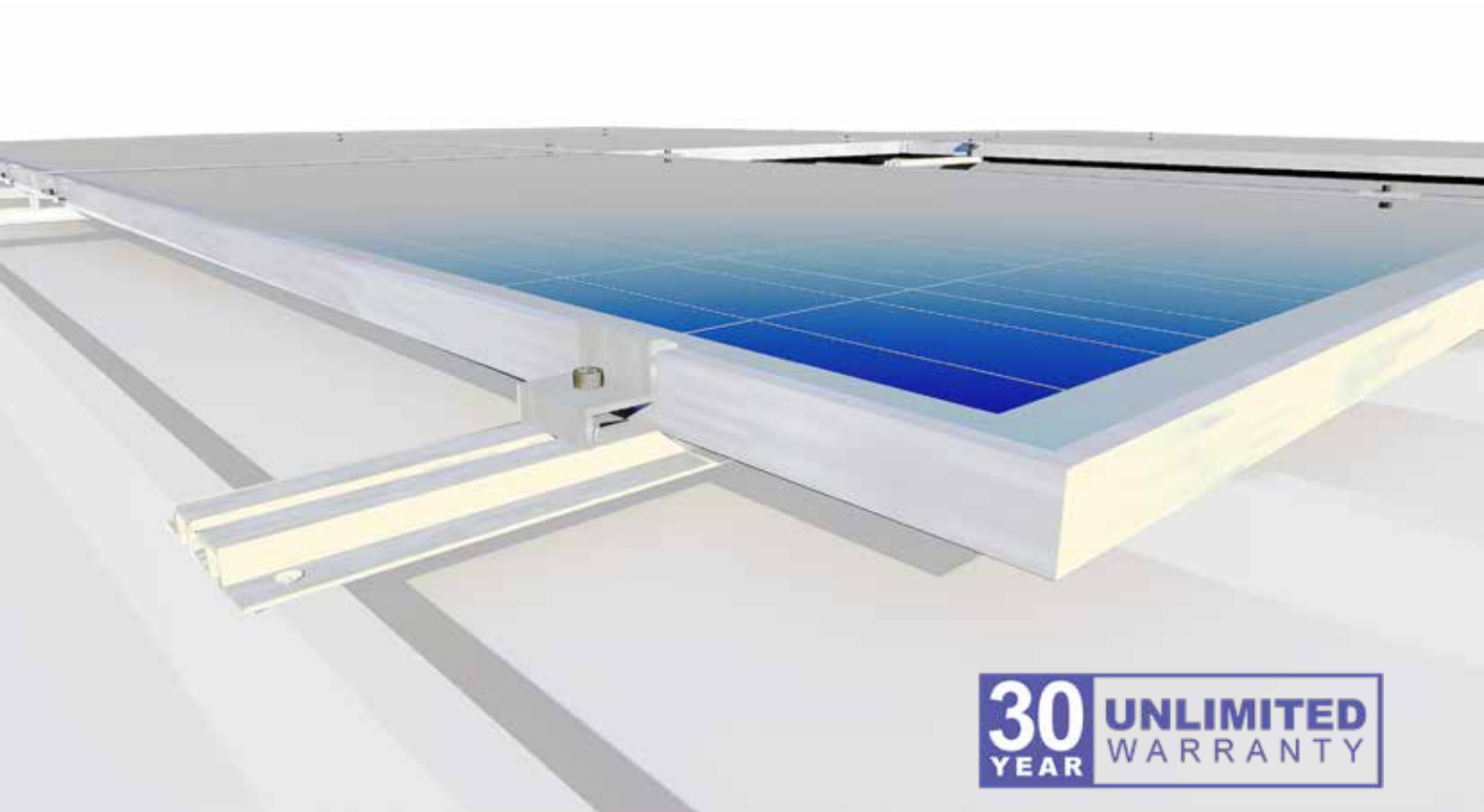


# Mounting systems for solar systems



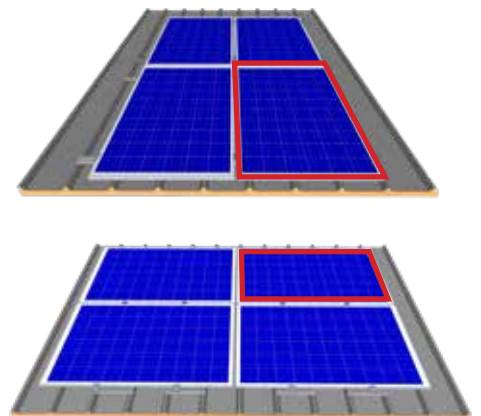
**Pitched roof system**

# Commercial rail system CRS

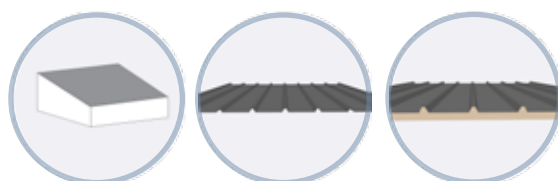


**30**  
YEAR **UNLIMITED**  
WARRANTY

- ▶ An innovative constantly improved rail system that is rigid durable and easy to install.
- ▶ Universal module clamps and suitable for portrait and landscape orientation.
- ▶ Fit universally to various types of pitched roofs.
- ▶ Fast system assembly decreasing the installation cost.
- ▶ Optimised for storage and transport.



The **CRS** System allows portrait and landscape mounting in the form of grid mounting thanks to the universal module clamps, which are rotatable by  $90^\circ$ .



## Application

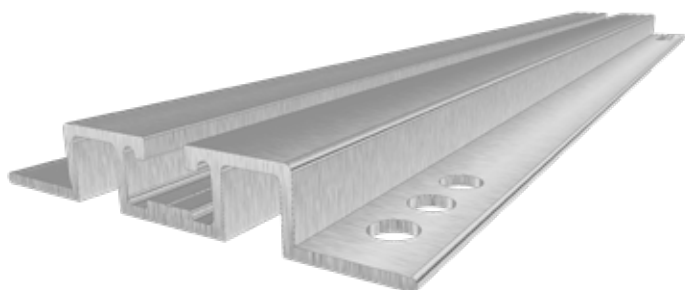
For pitched roofs with trapezoidal sheet metal or sandwich panels Roof inclination: °65 - 5

## Roof fixture

Screws in roofing with self-tapping thin sheet screws

## Requirements

- ▶ Crest width: At least 22 mm \*
- ▶ Crest spacing: 101 - 350 mm depending on crest width
- ▶ Flush area surrounding the bore hole:  $\varnothing \geq 20$  mm
- ▶ Module frame height: 30 - 50 mm

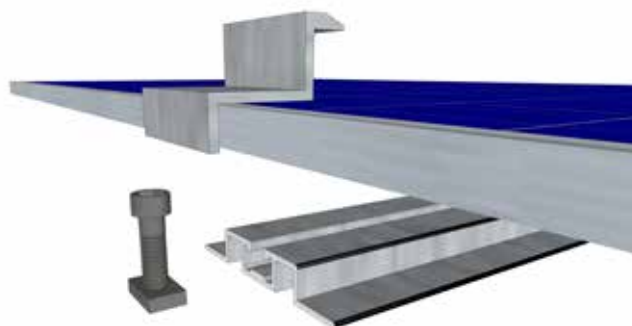


## Module orientation

Vertical or horizontal for Landscape and portrait module mounting

## Dimensions Rail W × H × L [mm]

85 x 13.8 x 350



## Module clamps

Item number

10311001 Center clamp for framed 30 - 40 mm

Clamping length: 50 mm



## Module clamps

Item number

10311002 End clamp for framed 30 - 40 mm

Clamping length: 50 mm



Item number

20121001 Hex socket screw M8x30mm with  
20121005 HAMMERHEAD nut



Item number

20121001 drilling screw with sealing washer  
6,3x110mm



For competent and comprehensive advice in planning your system, and for questions about logistics and order processing, our employees are gladly available to you.



**Haiakil L.L.C.**

**Obour building, Salah  
salem, Cairo, Egypt  
+20 01063830202**

**184 Airport Road, Umm  
Ramool, POBOX 35962  
+971600544000**

**[info@haiakil.com](mailto:info@haiakil.com)  
[www.haiakil.com](http://www.haiakil.com)**